



# Newsletter

Week 4 – 29 - 11 - 24

---

## F O R E W O R D



Dear Parents and Carers,

It has been a quiet week, The Infants and the Juniors have been practising their performances, which you will be able to see soon. More details to follow.

It was lovely to see so many parents, carers and relatives at the Junior School Book Fair. Thank you to everyone who supported it. Your purchases resulted in £295 worth of books for the school classrooms and library.

Recently we were awarded 'Equal Access School 2024'. This is in recognition of our involvement and commitment to girl's football over the last couple of years. We are very proud of this as it shows that we value all and put importance on everyone getting the same opportunities.

David Masters

## U P D A T E S

- **Week Attendance:**

National Target: 95% +  
National Actual YTD: 95.1%

FCVS Infants: **93.7%**  
FCVS Juniors: **95.2%**

- **Next week:**

Year 1 will be going to Milestones Museum on Tuesday.



# Diary Dates

---

| Key                                                                                                                                                                                                                                                                                                                                                                                                                                                                                                    |                                               |
|--------------------------------------------------------------------------------------------------------------------------------------------------------------------------------------------------------------------------------------------------------------------------------------------------------------------------------------------------------------------------------------------------------------------------------------------------------------------------------------------------------|-----------------------------------------------|
| <p>This is a working document and will change over the year, therefore we use this colour key to show how updated versions are the same or different to previously sent.</p> <p>It is intended to be a list of events so they can be saved in diaries. Alternatively, you can subscribe to our online calendar using this link:<br/> <a href="https://farnhamcommonjunior.secure-primariesite.net/diary/grid/2024/01/">https://farnhamcommonjunior.secure-primariesite.net/diary/grid/2024/01/</a></p> |                                               |
|                                                                                                                                                                                                                                                                                                                                                                                                                                                                                                        | What has stayed the same                      |
|                                                                                                                                                                                                                                                                                                                                                                                                                                                                                                        | What is new                                   |
|                                                                                                                                                                                                                                                                                                                                                                                                                                                                                                        | What has been changed from previously stated  |
| <b>ED</b>                                                                                                                                                                                                                                                                                                                                                                                                                                                                                              | An 'Event Details' document will be sent home |

| Date/Time                                                                                          | Event                                                                                                                                                                                                                                                                                                                                                                                                                                                                                                                                                                                                                                                                               |
|----------------------------------------------------------------------------------------------------|-------------------------------------------------------------------------------------------------------------------------------------------------------------------------------------------------------------------------------------------------------------------------------------------------------------------------------------------------------------------------------------------------------------------------------------------------------------------------------------------------------------------------------------------------------------------------------------------------------------------------------------------------------------------------------------|
| <b>Autumn 2 2024-25</b><br><b>Monday 4<sup>th</sup> November – Friday 20<sup>th</sup> December</b> |                                                                                                                                                                                                                                                                                                                                                                                                                                                                                                                                                                                                                                                                                     |
| Tuesday 10 <sup>th</sup> December<br>9:30am                                                        | KS1 Christmas Show<br><b>ED</b>                                                                                                                                                                                                                                                                                                                                                                                                                                                                                                                                                                                                                                                     |
| Wednesday 11 <sup>th</sup> December<br>9:30am                                                      | KS1 Christmas Show<br><b>ED</b>                                                                                                                                                                                                                                                                                                                                                                                                                                                                                                                                                                                                                                                     |
| Wednesday 11 <sup>th</sup> December                                                                | <p>Christmas Lunch at both schools</p> <p><b>Infants:</b> This is a gentle reminder for infant school parents to submit children's lunch choices for 29<sup>th</sup> November, 4<sup>th</sup> December and 11<sup>th</sup> December (Christmas Lunch day). Please fill in the form even if you are going to have a packed lunch on any of those days to help us minimise food wastage. Here is the link to the form <a href="#">Festive Season Lunches</a>. Many thanks.</p> <p><b>Juniors:</b> Orders will be sent out on Tuesday 26<sup>th</sup> with the usual lunch order. Deadline is 9am on Monday 2<sup>nd</sup> December 2024. No orders will be taken after this time.</p> |



|                                                                                                   |                                                                                    |
|---------------------------------------------------------------------------------------------------|------------------------------------------------------------------------------------|
| Thursday 12 <sup>th</sup> December<br>9:30am                                                      | EYFS Christmas Sing-Along<br><b>ED</b>                                             |
| Thursday 12 <sup>th</sup> December<br>9:10am in Hall                                              | Year 5 Viking Parent Assembly                                                      |
| Friday 13 <sup>th</sup> December<br>9:30am                                                        | EYFS Christmas Sing-Along<br><b>ED</b>                                             |
| Wednesday 18 <sup>th</sup> December<br>Years 3+4 2:00pm<br>Years 5+6 2:30pm                       | Carols<br><b>ED</b>                                                                |
| <b>Spring 1 2024-25</b><br><b>Monday 6<sup>th</sup> January – Friday 14<sup>th</sup> February</b> |                                                                                    |
| Monday 6 <sup>th</sup> January                                                                    | INSET Day – Schools Closed                                                         |
| Friday 24 <sup>th</sup> January                                                                   | Target sheet for parent consultations to go home                                   |
| Tuesday 28 <sup>th</sup> January<br>2:00pm – 5:00pm                                               | Parent Consultations<br>Learning and Progress Based<br>(All except Hawthorn – tbc) |
| Wednesday 29 <sup>th</sup> January                                                                | Parent Consultations<br>Hawthorn and Linden – times tbc                            |
| Thursday 30 <sup>th</sup> January<br>4:00pm 7:00pm                                                | Parent Consultations<br>Learning and Progress Based<br>(All except Linden – tbc)   |
| Monday 10 <sup>th</sup> February                                                                  | Junior Choir to Young Voices at Wembley                                            |
| <b>Spring 2 2024-25</b><br><b>Monday 24<sup>th</sup> February Friday 4<sup>th</sup> April</b>     |                                                                                    |
| Monday 24 <sup>th</sup> February                                                                  | Junior Book fair until 3 <sup>rd</sup> March                                       |
| Wednesday 26 <sup>th</sup> February                                                               | Prospective Parents Open Evening                                                   |
| Thursday 6 <sup>th</sup> March                                                                    | World Book Day<br>(Dressing up)<br><b>ED</b>                                       |
| Monday 14 <sup>th</sup> March                                                                     | Junior Theatre Group in School<br>The Jungle Book                                  |
| <b>Summer 1 2024-25</b><br><b>Tuesday 22<sup>nd</sup> April – Friday 23<sup>rd</sup> May</b>      |                                                                                    |
| Monday 12 <sup>th</sup> May –<br>Thursday 15 <sup>th</sup> May                                    | KS2 SAT's Week – Year 6                                                            |
| Friday 23 <sup>rd</sup> May                                                                       | INSET Day – Schools Closed                                                         |
| <b>Summer 2 2024-25</b><br><b>Tuesday 2<sup>nd</sup> June – Wednesday 23<sup>rd</sup> July</b>    |                                                                                    |



|                                                                |                                                                                       |
|----------------------------------------------------------------|---------------------------------------------------------------------------------------|
| Monday 2 <sup>nd</sup> June –<br>Friday 13 <sup>th</sup> June  | Year 4 Multiplication Test Window                                                     |
| Thursday 5 <sup>th</sup> June                                  | Meeting about Secondary Transfer Test and<br>applying for secondary school – Year 5's |
| Wednesday 11 <sup>th</sup> June                                | KS2 Celebration of Work<br>Year 3 to Year 6<br><b>ED</b>                              |
| Thursday 12 <sup>th</sup> June                                 | EYFS and KS1 Celebration of Work<br>Nursery to Year 2<br><b>ED</b>                    |
| Monday 16 <sup>th</sup> June –<br>Friday 20 <sup>th</sup> June | Year 6 River Dart Residential                                                         |
| Tuesday 24 <sup>th</sup> June                                  | New Reception Parents Meeting                                                         |
| Thursday 26 <sup>th</sup> June                                 | New Year 3 Parents Meeting                                                            |
| Thursday 26 <sup>th</sup> June                                 | Junior Clock Sports                                                                   |
| Thursday 26 <sup>th</sup> June                                 | New Classes Letters to Parents                                                        |
| Friday 27 <sup>th</sup> June                                   | Sports Day<br><b>ED</b>                                                               |
| Tuesday 1 <sup>st</sup> July                                   | Transition Day                                                                        |
| Tuesday 8 <sup>th</sup> July                                   | Nursery Transition Afternoon                                                          |
| Wednesday 9 <sup>th</sup> July                                 | Nursery Transition Afternoon                                                          |
| Tuesday 15 <sup>th</sup> July                                  | Reports to Parents                                                                    |
| Tuesday 15 <sup>th</sup> July                                  | Year 4 to Oakwood                                                                     |
| Tuesday 15 <sup>th</sup> July                                  | Year 2 Show                                                                           |
| Wednesday 16 <sup>th</sup> July                                | Year 6 Show - Afternoon                                                               |
| Thursday 17 <sup>th</sup> July                                 | Year 6 Show - Evening                                                                 |
| Wednesday 23 <sup>rd</sup> July                                | Year 6 Leavers Assembly                                                               |
| Wednesday 23 <sup>rd</sup> July                                | End of Year                                                                           |



# Next Week's Menu

---

## Week Four

W/C: 23/9, 28/10 (half term), 2/12

### Meat Free Monday

Vg Vegetarian Sausage Roll with New Potatoes & Peas  
V Baked Potato with Grated Cheese  
Cheese, Tuna or Ham Roll  
All accompanied by carrot sticks and cucumber  
Fresh, Chopped Watermelon

### Tuesday

\*Pork Sausage, V GF Hash Brown, & Baked Beans  
Vg Vegetarian Sausage, V GF Hash Brown, & Baked Beans  
V Baked Potato with Grated Cheese or Baked Beans  
Cheese, Tuna or Ham Roll  
All accompanied with a fresh side salad  
Vg Strawberry Malt Loaf Bar  
or  
Fresh Fruit

### Wednesday

GF Roast Chicken, V GF Roast Potatoes,  
Mixed Vegetables & V GF Gravy  
V Macaroni Cheese & Mixed Vegetables  
V Baked Potato with Grated Cheese  
Cheese, Tuna or Ham Roll  
All accompanied with a fresh side salad  
V Yoghurt  
or  
Fresh Fruit

### Thursday

GF Mild Beef Chilli with Rice & Carrots  
GF Vg Bean & Lentil Chilli & Carrots  
V Baked Potato with Grated Cheese  
Cheese, Tuna or Ham Roll  
All accompanied with a fresh side salad  
V Chocolate Ice Cream  
or  
Fresh Fruit

### Friday

\* Breaded White Fish Fillet, Vg GF Oven Chips & Peas  
Vg Breaded Vegetable Burger Vg GF Oven Chips & Peas  
V Baked Potato with Grated Cheese or Baked Beans  
Cheese, Tuna or Ham Roll  
All accompanied with cucumber slices  
V Chocolate Chip Muffin  
or  
Fresh Fruit



# CHRISTMAS RAVE

@ Gold Hill Baptist Church  
Chalfont St. Peter, SL9 9RF

SATURDAY **14 DECEMBER**  
3PM - 4:30PM

**DJ MRCLOTTEY**  
Multi-genre gospel music & uplifting tracks  
Clean lyrics for innocent ears

Glow sticks  
Face Painting  
Balloons  
Refreshments

Get tickets here!



Terms & Conditions apply

**Tickets £3 per person**  
0-2 years old FREE  
Ticket includes free glow stick & refreshments

More info on Eventbrite  
All children must be accompanied by an adult

hosted by  
**FHCC**  
REBUILD • RESTORE • RENEW  
The Farnham & Hederley Community Church





# DESIGN A CHRISTMAS BAUBLE



1ST PRIZE  
£50  
GIFT CARD



2ND PRIZE  
£25  
GIFT CARD

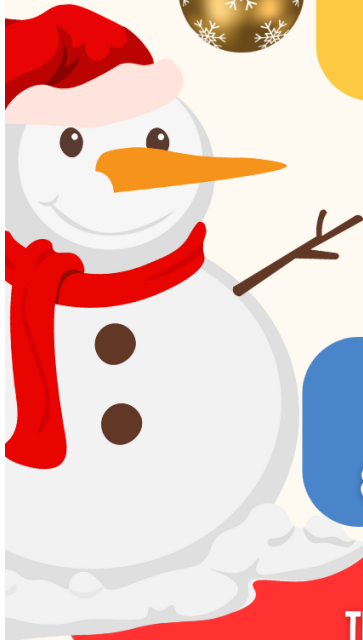
## COMPETITION

DOWNLOAD AN  
ENTRY FORM:



CLOSING DATE:  
16 DECEMBER 2024

AGE GROUPS:  
UNDER 4YRS, 4-7YRS,  
8-11 YRS, 12-17 YRS, ADULTS



FIND OUR POST BOXES AT  
THE FARNHAM COMMON VILLAGE SCHOOLS,  
THE LIBRARY & FARNHAM COMMON VILLAGE HALL

**FRPC** Parish Council  
for The Parnhams

THE ENTRY FORM WILL ALSO BE ATTACHED TO  
THE EMAIL



[www.facebook.com/FCVSchools](https://www.facebook.com/FCVSchools)